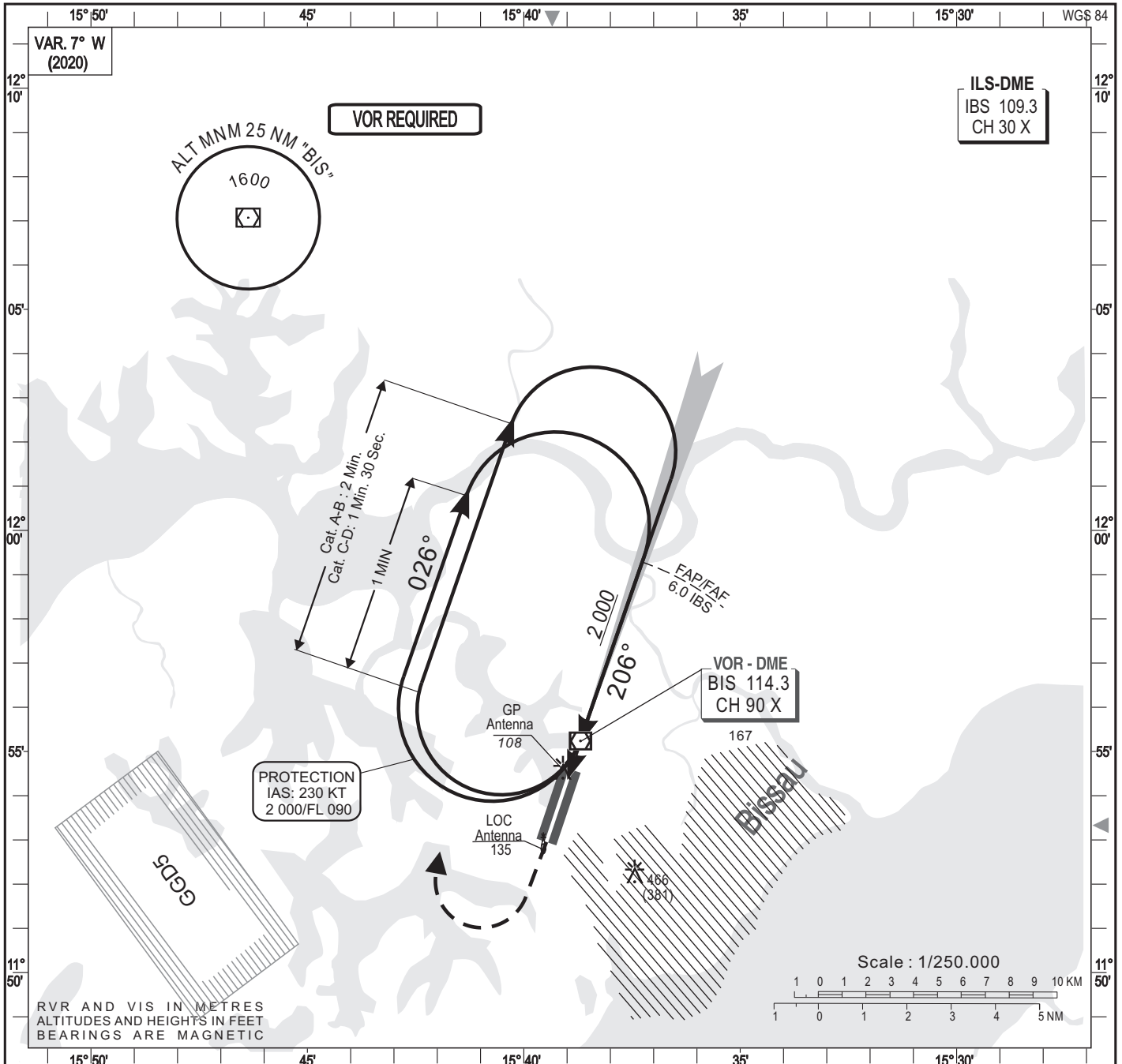
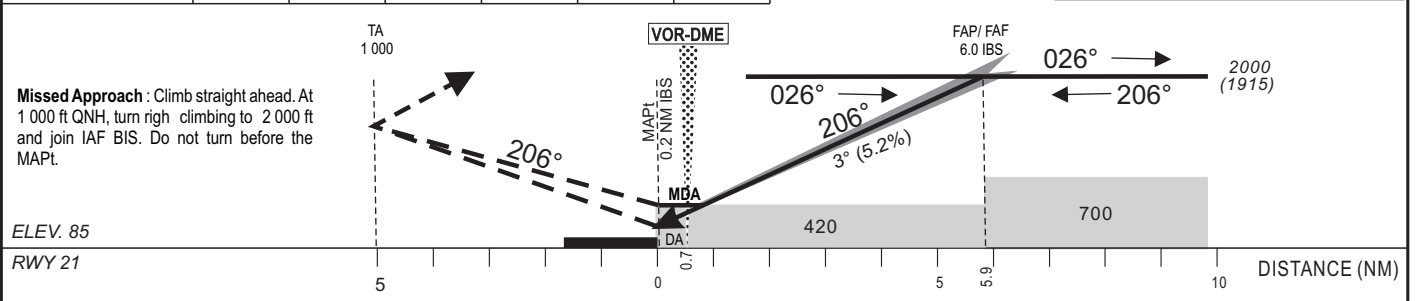


HEIGHTS RELATED TO THR RWY 21- ELEV 85 FT



Distance to ILS-DME (NM)	FAP/FAF	6	5	4	3	2	TRANSITION ALTITUDE : 3 000
Altitude (ft)	2 000	1 670	1 350	1 040	720		



CAT	CAT.1				LOC				CIRCLING (3)				RVR for take-off		
	OCA (OCH)	DA	DH	RVR(1)	RVR(2)	OCA (OCH)	MDA	MDH	RVR(1)	RVR(2)	OCA (OCH)	MDA	MDH	VIS	CAT A - B - C
A	265 (180)	290 (200)	700	1000	417 (332)	420 (340)	1200	1500	579 (450)	580 (450)	1500				
B	277 (192)	290 (200)	700	1000	417 (332)	420 (340)	1300	1500	763 (634)	770 (640)	1600				
C	285 (200)	290 (200)	700	1000	417 (332)	420 (340)	1400	1800	862 (733)	870 (740)	2400				
D	296 (210)	300 (210)	700	1000	417 (332)	420 (340)	1600	2000	862 (733)	870 (740)	3600				

Notes : - (1) With approach lights - (2) Without approach lights
- (3) Daytime only - OCH MDH AAL

Timing:		FAP/THR	
		5.9 NM	
90	3 Min 56	140	2 Min 32
100	3 Min 32	150	2 Min 22
110	3 Min 13	160	2 Min 13
120	2 Min 57	170	2 Min 05
130	2 Min 43	180	1 Min 58

AMDT10/22 : Update